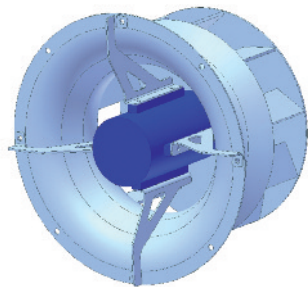
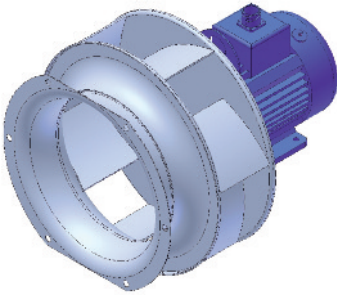


Fans

Open-running centrifugal fans (plug-fans)



Applications

Heat exchangers / radiators

Traction motors

Transformers

Converters

Ventilation plants

OR/COR/ORV Series

Ideal products for applications requiring a very compact and high-performance solution, the open-running centrifugals (OR Series) eliminate some typical limits of the traditional centrifugal fans. The compact dimension and the absence of a preferential direction of the airflow make these fans very useful wherever high pressures must be generated in a small space and a 90° change of direction of the airflow is not recommended. They are the optimal solution for the forced ventilation of limited environments (like boxes containing electrical or electronic equipments).

ORV Series fans are fitted with a simplified housing to separate the motor from the flow generated by the fan (e.g. applications with air temperature higher than 60°C).

Ready-to install and innovative, the COR Series features an extremely compact design, due to an exclusive fixation system of the electric motor.

Derived from the technology of COMET's centrifugal fan units, the impellers used on OR/COR/ORV Series can be made of carbon steel, aluminum or stainless steel, with straight, curved or profiled blades.

General Characteristics

- Three-phase motors IP55/IP65, with Class F or H insulation, 50/60Hz, suitable for inverter supply
- Impellers in carbon steel, stainless steel or aluminium, with straight, curved or profiled blades
- Finishing by 3-layers epoxy-pack painting, certified for 500 hours salt mist test resistance
- Special motors and special fixation system for COR Series

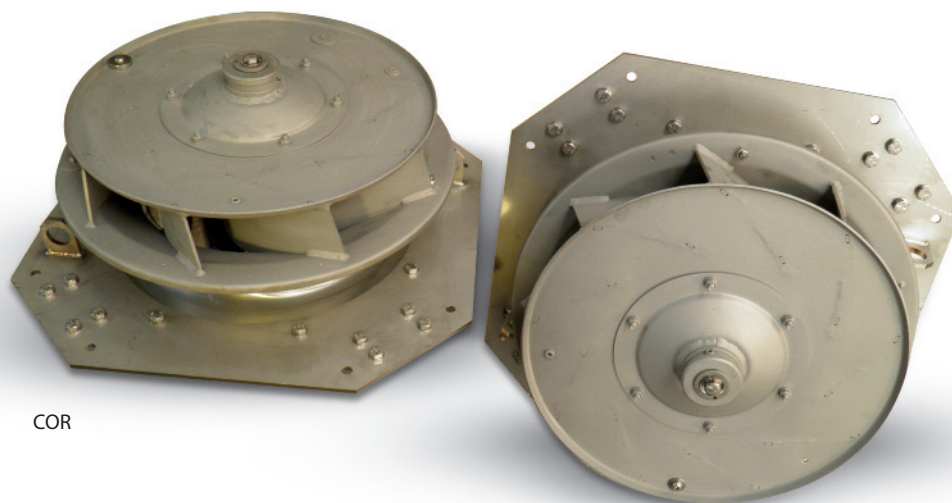
Versions with special materials, special dimension, motors according to customer's specifications.



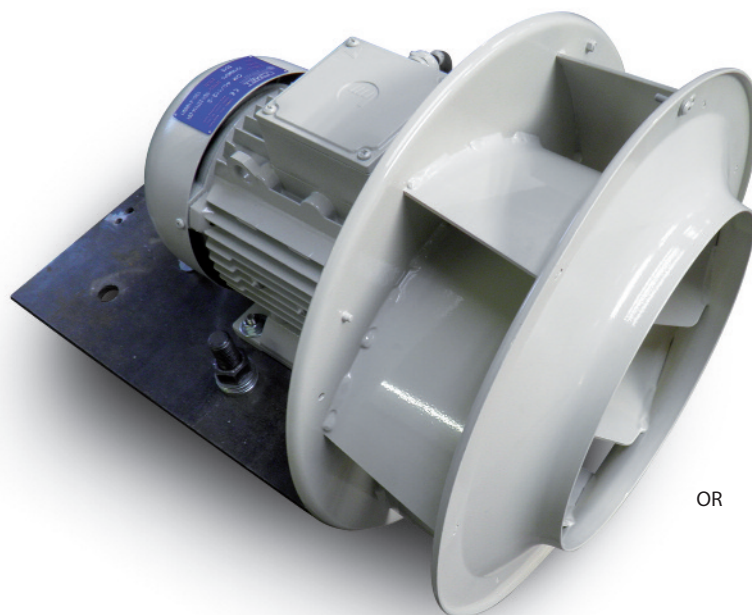
Microelettrica Scientifica

Fans

Open-running centrifugal fans (plug-fans): OR/COR/ORV Series



COR



OR

Dati tecnici

| Series | Diameters [mm] | Characteristics | Pressure | Power [kW] |
|--------|----------------|---|--------------|------------|
| OR | 150 ÷ 500 | Open-Running Centrifugal (Plug-Fan) | up to 3000Pa | 0.18 ÷ 22 |
| COR | 200 ÷ 500 | Compact Open-Running Centrifugal, with fixing plate | up to 2500Pa | 0.37 ÷ 15 |
| ORV | 200 ÷ 500 | Open-Running Centrifugal with simplified housing | up to 3000Pa | 0.55 ÷ 22 |



KNORR-BREMSE



Microelettrica Scientifica

Comet Fans S.r.l. Via Leonardo Da Vinci, 17 20020 Solaro - Milano - Italy
 Tel. +39 02.96.79.01.43 Fax +39 02.96.93.176 - sales@cometfans.com
 www.cometfans.com