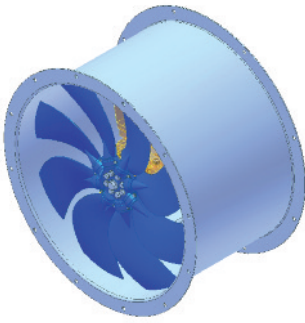


Fans

Direct driven axial fans



AF/LA Series

Applications

Aircoolers

Heat exchangers / Radiators

Cooling of electrical machines (motors, converters, inductors, generators, transformers)

Naval

Ventilation and Air Conditioning Plants

The medium performance "AF" and "LA" fan Series were designed to meet the majority of cooling and ventilation requirements typical of industrial applications. They were conceived to provide the best mix of reliability, versatility, performance, quality, environmental impact and cost. All of these products have features making them easily compliant with the most widespread technical specifications and allowing significant modification based on specific customer requirements. Direct-coupling solutions with motors from 2 to 16 poles are available, to suit fan performance and noise requirements. Belt-driven solutions with larger diameters and selected speed are also available (see "AFT").

The "AF" and "LA" Series are versatile and reliable, characteristics that make them the COMET's most successful products, suitable for the most frequent ventilation needs. COMET "AF" and "LA" Series of fans have proved their efficiency every day in over 60 countries worldwide, in extreme climates, harsh environments and a wide range of temperatures for the most demanding operations.

These Series of fans are selected using COMET's dedicated software, based upon the results of a huge number of tests performed by COMET on test tunnels and actual installations. The selection is based on five blade profiles in aluminium alloy, and others in fiberglass or polipropylene, with number of blades varying between 3 and 12 blades.

General Characteristics

AF

- Impellers with aerofoil profile blades in extruded aluminium alloy low-noise type
- Adjustable blade pitch when standstill
- Three-phase motors IP55 with Class F or H insulation, 50/60Hz, 2-16 pole, from the best European manufacturers
- Casings in carbon steel, electro-welded, with anti-corrosive finishing by hot-dip galvanization

Wide range of ancillary parts and customizations

Special versions with special materials, certified components, motors according to customer's specifications.

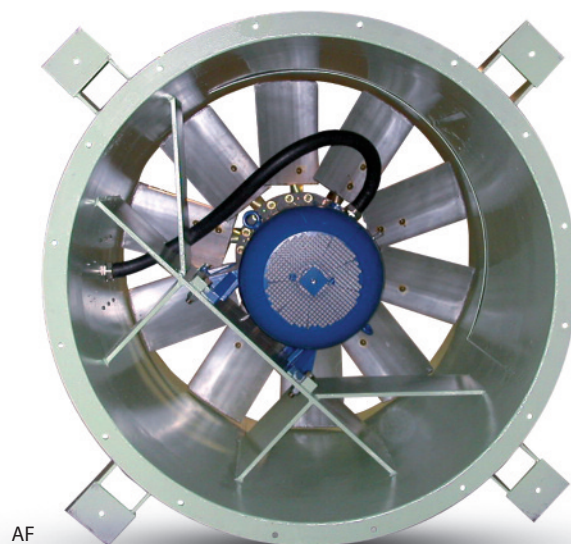
Impellers in PPG, FRP or steel are available upon request

LA

- Impellers with aerofoil profile blades in PPG, low-noise type
- Three-phase motors IP55 with Class F insulation
- Casings in carbon steel, electro-welded
- Finishing by hot-dip galvanization : longer durability in harsh environment

Fans

Direct driven axial fans: AF/LA Series



Technical Data

Series	Diameter [mm]	Air Flow	Pressure	Power [kW]
AF	400 ÷ 2400	up to 400000mc/h	up to 1500Pa	0.55 ÷ 90
LA	310 ÷ 800	up to 35000mc/h	up to 800Pa	0.25 ÷ 7.5



KNORR-BREMSE



Microelettrica Scientifica

Comet Fans S.r.l. Via Leonardo Da Vinci, 17 20020 Solaro - Milano - Italy
Tel. +39 02.96.79.01.43 Fax +39 02.96.93.176 - sales@cometfans.com
www.cometfans.com