

Switches

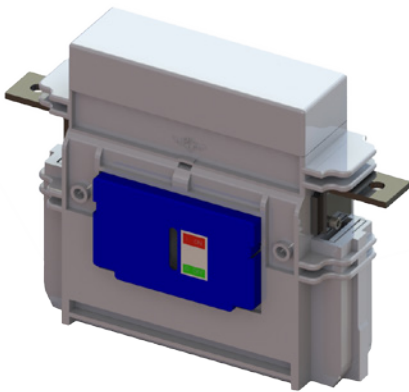
LTK line

General Characteristics

Disconnecter suitable for DC and AC applications.

The disconnecter is operated by electrical motor and it is composed by two main parts:

- High voltage Main circuit case
- Low voltage Actuation group



The line is composed of:

- 2 different bodies:
 - Up to 900 A
 - Up to 1800 A
- 1, 2 and 3 poles disconnectors
- 3 different pole types:
 - Normally open, Single Pole Single Throw (SPST)
 - Normally closed and normally open combined, Double Pole Single Throw (DPST)
 - Single Pole Change Over (SPCO)
- 3 terminals arrangement:
 - S-Terminals
 - E-Terminals
 - B-Terminals

Designed in order to improve the insulation level with the following features:

- Not metallic parts used to release the disconnecter have a Comparative Tracking Index (CTI) greater or equal to 600
- Air clearance 40 mm
- Air clearance between open contacts 50mm
- Creepage distance 80 mm

A full catalogue solution

A full catalogue solution						
4 Voltage ranges	Up to 4000V					
6 current ranges	400A	600A	900A	1200A	1500A	1800A
3 pole versions	1-pole		2-poles		3-poles	
3 terminal arrangements	S-terminals (opposite side)		E-terminals (same side)		B-terminals (same bottom/back side)	
3 configurations	NO Pole SPST (M)		Combined NO + NC Pole DPST (H)		Change over SPCO (Y)	

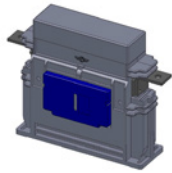


Microelettrica Scientifica

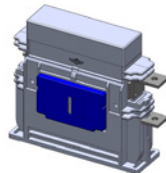
Switches

LTK Line

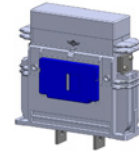
LTK Line catalogue features: poles version



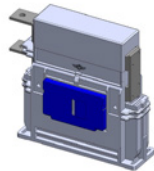
S-terminal (opposite side)



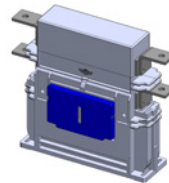
E-terminal (same side)



B-terminal (same bottom / back side)

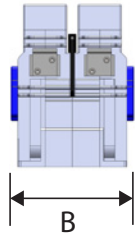


Single Pole Change Over (SPCO)

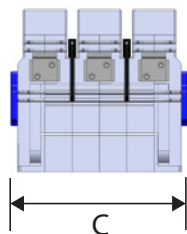


Double Pole Single Throw (DPST)

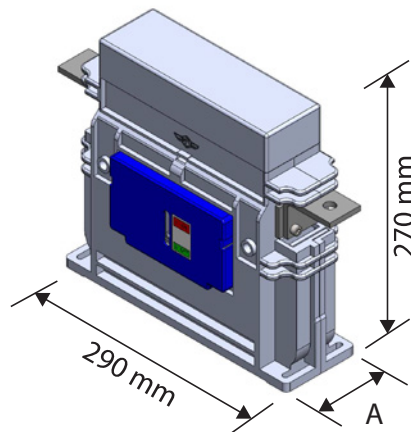
Narrow body versions:



B



C



270 mm

290 mm

A

	A [mm]	B [mm]	C [mm]
900A	113	209	293
1800A	143	263	383